

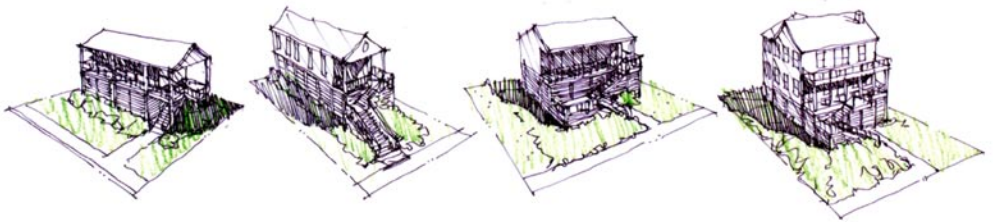


Elevating Historic Properties

GRANT RECIPIENT GUIDE TO
LOWER-IMPACT CONSTRUCTION

mississippi development authority

MISSISSIPPI



The Mississippi Development Authority (MDA) has developed Elevation Design Guidelines for owners of historic properties or owners of properties that have been evaluated as contributing to the character of historic districts. The guidelines assist these applicants in elevating their structures in conformance with new Federal Emergency Management Agency (FEMA) and National Flood Insurance Program (NFIP) requirements, as well as National and State historic preservation guidance. This Guide has been designed to assist you in ensuring that archaeological resources are not inadvertently damaged during construction activities related to elevation, repair, or reconstruction work.



Once the local Historic Preservation Commission (HPC) and the State Historic Preservation Office (SHPO; Mississippi Department of Archives and History) approve your MDA-funded elevation design, you are required to take steps to ensure that you or your contractors avoid unanticipated archaeological impacts during construction. This requires referencing

the Lower-Impact Construction Guidelines in any contract documents that are produced with MDA funding and obtaining MDA's approval before allowing contractors to initiate ground disturbance.

To ensure that the Lower-Impact Construction Guidelines are completely understood, MDA can, upon request, provide archaeologists to conduct onsite briefings for contractors and/or monitor the ground disturbing activities so that they conform to these guidelines. A pamphlet providing visual aids for contractors to identify archaeological features and artifacts is also available upon request, by calling MDA at 601-359-3449. Please be aware that MDA may inspect demolition and construction sites at any time to verify compliance with Lower-Impact Construction Guidelines.

General Approach

The main goal for the Lower-Impact Construction Guidelines is to avoid, to the greatest extent possible, disturbing anything below the ground by minimizing the depth of soil disturbance and compaction. This can best be achieved by following a few general guidelines:

- Disconnect and cap utilities before work begins.
- Restrict construction and/or demolition activities, including the placement of heavy equipment, to places where the ground has already been disturbed by actions like construction, development, utility trenching, surface grading, and landscaping.
- Place heavy equipment on hard or firm surfaces to help prevent sinking.
- Use tracked vehicles and/or large-tired equipment where possible to minimize soil disturbance and compaction.
- Avoid the use of heavy equipment if it sinks approximately 6 to 8 inches below the current ground surface. While equipment can be used when it is raining, the rate of sinking must be monitored.

- Shear off existing structural features like piers and footings at the ground surface whenever possible to minimize soil disturbance. If these features must be removed, heavy equipment should not dig deeper than 6 inches below the bottom of the footing or pier. Excavation should also not exceed a 3-foot width around the feature.
- Do not remove or salvage below-grade architectural features.
- Do not allow contractors to bury debris on site or fill any voids (e.g., cisterns, privies, wells, and/or basement depressions) with debris or unclean fill.
- Do not grade in excess of 6 inches below the existing surface.
- Only remove slabs that present a public health and safety threat, as confirmed by an MDA official. Remove slabs by hoisting, not excavation, to limit soil disturbance.

Archaeological Finds

This assemblage of late 19th- to 20th-century artifacts includes animal bone, historic ceramics, glass bottles, and jars. By identifying maker's marks on plates and bottles, archaeologists can determine the date range of a site's occupation.



This worked object is called a prehistoric projectile point. This stone tool, possibly a spear point, was made and used about 3,000 years ago. Archaeologists have located artifacts related to human activity in Mississippi going back 10,000 years.

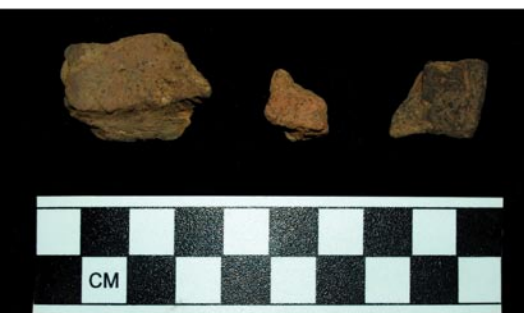


If Native American human remains or archaeological materials of any kind are discovered during the course of an MDA-funded project, the grant recipient and the contractor are responsible for working with MDA and its contractors or partners, including the SHPO—the Mississippi Department of Archives and History—and interested Tribal Governments to protect the finds until they can be properly evaluated by these entities.

These evaluations will determine the significance of the find, whether it warrants further investigation or protection, and what the disposition of the find will be. If these guidelines are not followed, the grant recipient may jeopardize Elevation Grant Program (EGP) or Small Rental Assistance Program (SRAP) funding. The grant recipient and/or the contractor may also be subject to criminal prosecution and/or civil administrative action under State antiquities laws.



This picture depicts a series of late 19th- to 20th-century artifacts. Small discarded objects, such as the glass lamp chimney (bottom, center) from a gas or oil lamp, can often provide clues to how people lived in the past. Archaeologists also examine and interpret personal items, such as porcelain buttons and glass bottles, to help more fully understand customs and practices of earlier cultures.



Representing pieces of prehistoric ceramics, these small bits of fired clay are the fragments of large cooking or storage vessels. Like many artifacts, the stylistic changes in ceramic production help archaeologists date a site's occupation period.

Human Remains

Contractors **MUST STOP WORK** immediately if any human skeletal remains are uncovered during the construction/demolition activities. You must immediately notify MDA, the local police department, and the local coroner's office using the contact numbers supplied below.

Archaeological Materials

Contractors **MUST STOP WORK** if the construction/demolition activities disturb a large concentration of archaeological artifacts (such as old bricks, ceramic pieces, historic bottle glass or cans, coins, beads, stones shaped by humans to form tools, pieces of crude clay pottery, etc.). You must immediately notify MDA and the SHPO—the Mississippi Department of Archives and History—using the contact numbers supplied on the following page.

Contractors **SHOULD TAKE ALL REASONABLE MEASURES TO AVOID HARM** to exposed archaeological resources when archaeologists are not present. You can contact MDA to request that a professional archaeologist conduct an onsite assessment. A professional archaeological assessment can take up to 1 hour.

Contractors **MUST STOP WORK** in the vicinity of exposed archaeological sites until MDA archaeologists have completed an assessment and, if necessary, consult with the SHPO, Native American Tribes or law enforcement agencies.



Artifacts and other archaeologically sensitive materials can sometimes be detected by careful examination of the ground surface. However, more often than not, such artifacts are found buried below ground level.

The following resources are available to assist you:

Mississippi Development Authority (MDA):

Elevation Grant Program – Michael Thames 601-359-3449

Small Rental Assistance Grant Program – Nell Rogers 601-359-3449

Mississippi Department of Archives and History (SHPO):

Greg Williamson, Review and Compliance Assistant..... 601-576-6940

Pam Edwards-Lieb, Chief Archaeologist..... 601-576-6940

Local Sheriff's Office and Coroner Contact Numbers:

Harrison County Sheriff's Office..... 228-896-3000

Harrison County Coroner's Office 228-865-4291

Hancock County Sheriff's Office 228-463-2088

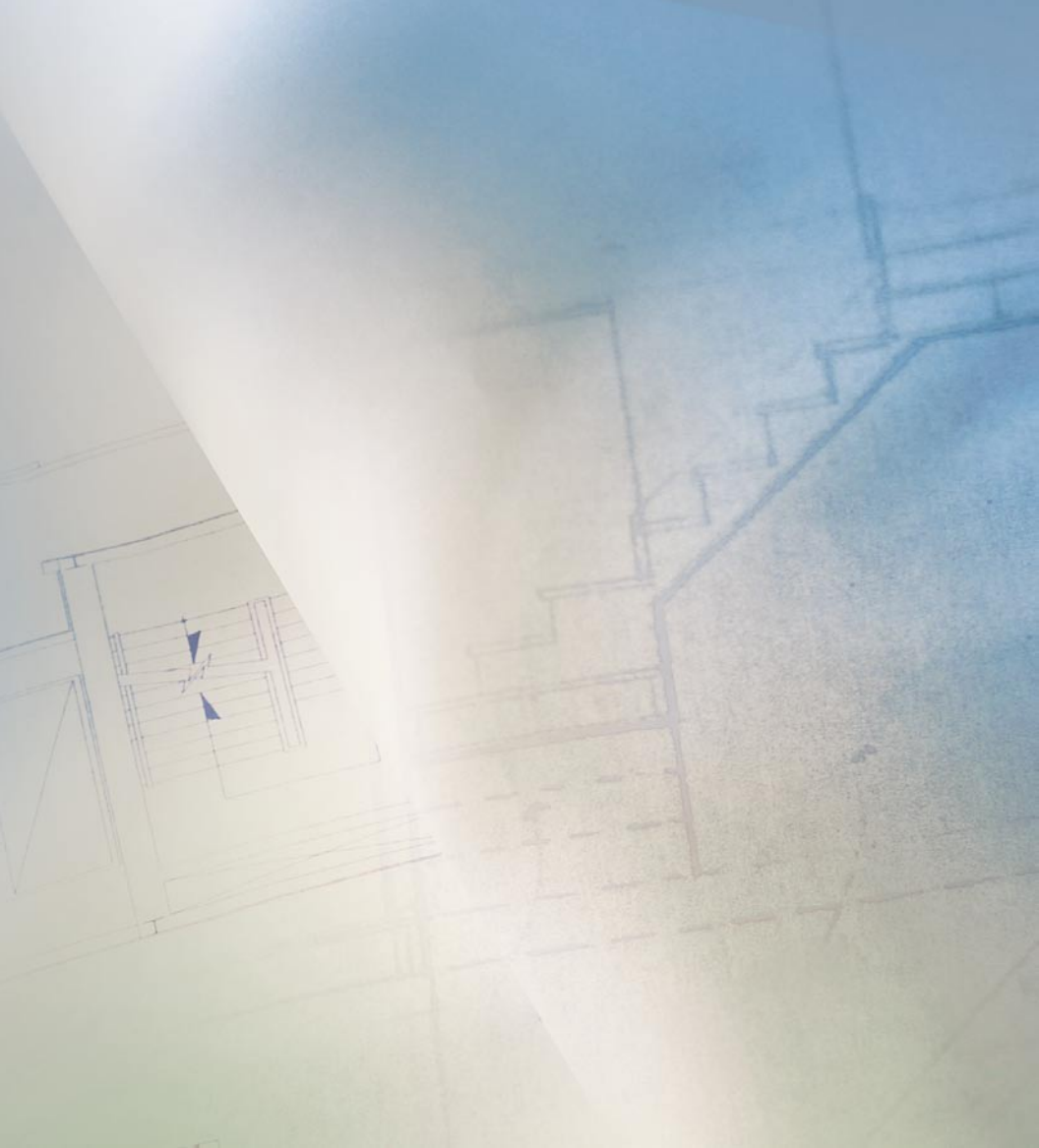
Hancock County Coroner 228-467-9031

Jackson County Sheriff's Office..... 228-769-3063

Jackson County Coroner..... 228-769-3197

Pearl River County Sheriff's Office 601-795-2241

Pearl River County Coroner..... 601-749-7700



Prepared by **URS** for the Mississippi Development Authority